

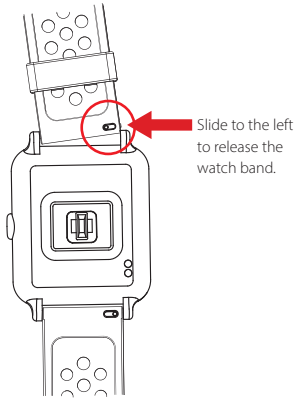


Star 2

Pocket Guide

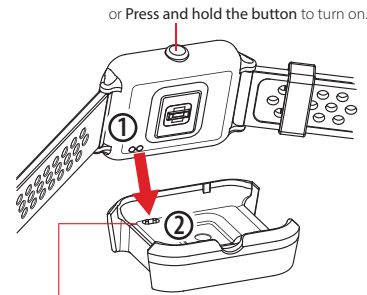
1 Installing the Watch Bands

Insert one side of the spring bar of the watch band into your watch.
Slide the quick-release pin on the spring bar to attach the band to your watch.



2 Charging and Turning on the Watch

Please charge the battery when using your watch for the first time. The watch will automatically turn on when it is charging.



Align the watch's charging point ① with the charger's charging dock ② and insert it.

⚠️ • To prevent corrosion, thoroughly clean and dry the contacts and the surrounding area before charging.

3 Begin Setup

When using the watch for the first time, the installation steps will be displayed on the screen. Please follow the on-screen instructions.

STEP A Read the instructions for use.

Pair Star 2 with your device:

- [On Your Phone]
1. Download and open Ala Connect.
 2. Register and Log in.
 3. Main Menu > Device > Add a device.
 4. Follow the on screen instructions from the app to complete the setup process.

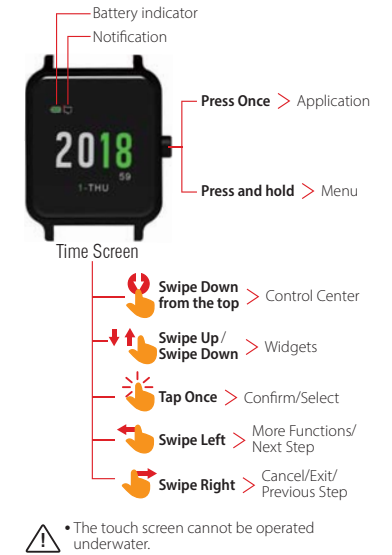
[On Your Watch]
The watch will provide a PIN code to complete the pairing process.

STEP C Enter user information:

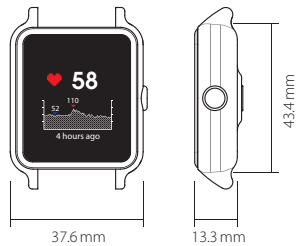
Ignore this step if you have completed step A.

⚠️ • Scan the QR Code to get the Ala Connect App.
• In order to use "Notification", please pair your watch and phone.

Overview



⚠️ • The touch screen cannot be operated underwater.



Specification

- Name: Star 2 GPS Watch
- Model: WB002
- Colored Touch Screen
- Waterproof: 5 ATM
- Rechargeable Lithium Battery
- Case Weight: 25.1 g
- Built-in Bluetooth 4.0®, ANT+®
- Built-in Sensors: Optical Heart Rate Monitor, Digital Compass, Thermometer, Barometric Altimeter, Accelerometer and GPS
- Smartphone Compatibility: iOS 9.0 or above, Android 4.4 or above
- Applications: Ala Connect App (Android/iOS) GPT Center (Windows/iMac)
- Standard Equipment: Star 2 Watch, Charging dock, GPT Instruction Card, Pocket Guide

2PF090270150001, 2019/11 V0.3

Federal Communications Commission Statement

This device complies with FCC Rules Part 15. Operation is subject to the following two conditions:

- This device may not cause harmful interference.
- This device must accept any interference received, including interference that may cause undesired operation.

This equipment has been tested and found to comply with the limits for a class B digital device, pursuant to Part 15 of the Federal Communications Commission (FCC) rules. These limits are designed to provide reasonable protection against harmful interference in a residential installation. This equipment generates, uses, and can radiate radio frequency energy and, if not installed and used in accordance with the instructions, may cause harmful interference to radio communications. However, there is no guarantee that interference will not occur in a particular installation. If this equipment causes harmful interference to radio or television reception, which can be determined by turning the equipment off and on, the user is encouraged to try to correct the interference by doing one or more of the following measures:

- Reorient or relocate the receiving antenna.
- Increase the separation between the equipment and receiver.
- Connect the equipment into an outlet on a circuit different from that to which the receiver is connected.
- Consult the dealer or an experienced radio/TV technician for help.

FCC Caution

Any changes or modifications not expressly approved by the party responsible for compliance could void the user's authority to operate the equipment.

The antenna(s) used for this transmitter must not be co-located or operating in conjunction with any other antenna or transmitter.

Radiation Exposure Statement:

This equipment complies with FCC radiation exposure limits set forth for an uncontrolled environment. End users must follow the specific operating instructions for satisfying RF exposure compliance. To maintain compliance with FCC exposure compliance requirement, please follow operation instruction as documented in this manual.

Presence Condition of the Restricted Substances(RoHS)

Unit	Equipment name: Star 2 GPS Watch Type designation (Type): WB002					
	Pb Lead	Hg Mercury	Cd Cadmium	Cr+6 Hexavalent Chromium	PBB Polybrominated Biphenyls	PBDE Polybrominated Diphenyl Ethers
Display	○	○	○	○	○	○
Circuit board	○	○	○	○	○	○
Shell	○	○	○	○	○	○
Watchband	○	○	○	○	○	○
Charging cable	○	○	○	○	○	○
Packaging material	○	○	○	○	○	○

Note 1: "Exceeding 0.1 wt %" and "exceeding 0.01 wt %" indicate that the percentage content of the restricted substance exceeds the reference percentage value of presence condition.
 Note 2: "○" indicates that the percentage content of the restricted substance does not exceed the percentage of reference value of presence.
 Note 3: The "-" indicates that the restricted substance corresponds to the exemption.



The product contains lithium-ion battery, please recycle according to Waste Disposal Act.

Product Warranty

We thank you for purchasing **ATTACUS** products. We provide a one-year manufacturer's warranty from the date of purchase.

Warranty Period:

We provide repair service free of charge but such service will be limited to normal use only. Any damage caused by misuse of users shall not be covered by the warranty hereof.

- 1) We offer a risk free 90 day warranty on all replacement parts that we offer for you.
- 2) User will pay for postage of replacement products from home to our service center. (Please pack properly)

Non-Warranty Repair Policy: (User needs to pay for the repairs.)

- 1) Malfunction or damage caused by improper use, disassembly and modification.
- 2) If damage caused by accident, abuse, misuse, flood, fire, earthquake, any other natural disasters or human negligence.
- 3) Due to normal wear and tear, such as battery, armband, etc.
- 4) If any serial number has been removed or defaced.
- 5) If it is damaged after the warranty expires.

Model **WB002** Date of purchase **YYYY / MM / DD**
 Serial No. **WB002**

(The serial number is printed directly on the back of device.)

Dealer's Stamp

Customer Service (only applicable in Taiwan)	
ALATECH Technology Limited.	
ADD 39F, No.758, Jungming S. Rd.	
Taichung City 40255, Taiwan	
TEL +886-4800-608341	
Manufacturer	
Zhejiang ALA Fitness Technology LTD.	
ADD No.405 Tongxin Road,	
Tongxiang Economic Development Zone,	
Zhejiang, China	
+86-573-8862 8666	